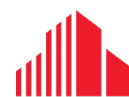




FOR LEASE | PRIME RICHMOND ROW RETAIL/OFFICE SPACE

# 605 RICHMOND STREET UNIT A

*London, ON N6A 3G3*



**CUSHMAN &  
WAKEFIELD**

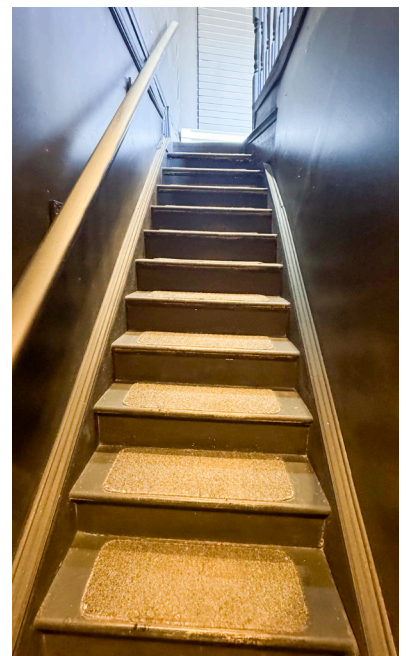
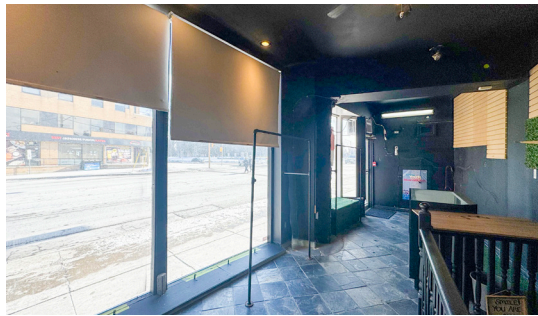
Southwestern Ontario

# PROPERTY HIGHLIGHTS

Prime corner location on Richmond Row retail/office/commercial space For Lease.

UNIT	AVAILABLE SPACE	ASKING RENT
A	Approx. 1,300 SF	\$2,600 per month + utilities + HST

- **Zoning:** BDC(1) - Permits a wide range of uses
- **Parking:** One space available behind the building
- Approx. 200 SF on the main floor plus approx. 1,100 SF finished space in the lower level
- Formerly Almost Paradise and clothing retail store
- Large bright windows at the front of the space
- The building is professionally managed and maintained
- Great exposure and signage to Richmond Street
- Located on Richmond Street at the corner of Richmond Street and Central Avenue and across the street from Victoria Park
- Space available immediately



**TYLER DESJARDINE**  
*Sales Representative*  
 519 438 5403  
 tyler.desjardine@cushwakeswo.com

**CUSHMAN & WAKEFIELD**  
 SOUTHWESTERN ONTARIO  
 850 Medway Park Dr, Suite 201  
 London, Ontario N6G 5C6  
 www.cushwakeswo.com

**CUSHMAN & WAKEFIELD**  
 Southwestern Ontario

©2025 Cushman & Wakefield Southwestern Ontario, Real Estate Brokerage, Independently Owned and Operated. A Member of the Cushman & Wakefield Alliance. This information has been obtained from sources believed to be reliable but has not been verified. No warranty or representation, express or implied, is made as to the condition of the property (or properties) referenced herein or as to the accuracy or completeness of the information contained herein, and same is submitted subject to errors, omissions, change of price, rental or other conditions, withdrawal without notice, and to any special listing conditions imposed by the property owner(s). Any projections, opinions or estimates are subject to uncertainty and do not signify current or future property performance. All rights reserved.