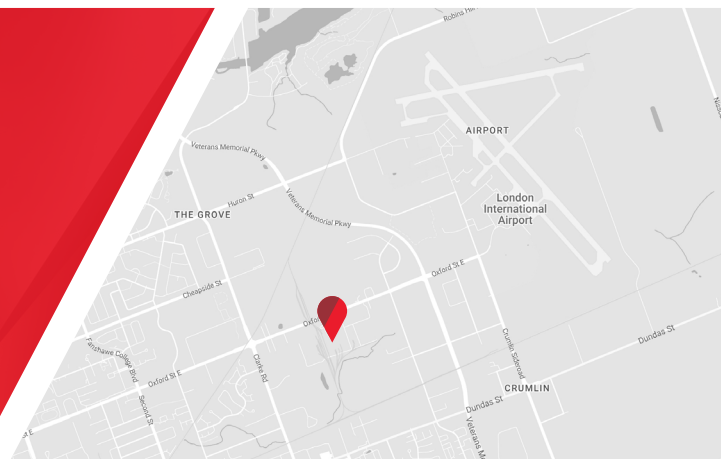


8,000 PALLET POSITIONS AVAILABLE | FOR LEASE



2021 OXFORD STREET EAST 2 PALLET POSITIONS

London, ON N5V 2Z7



**CUSHMAN &
WAKEFIELD**

Southwestern Ontario

ABOUT THE PROPERTY

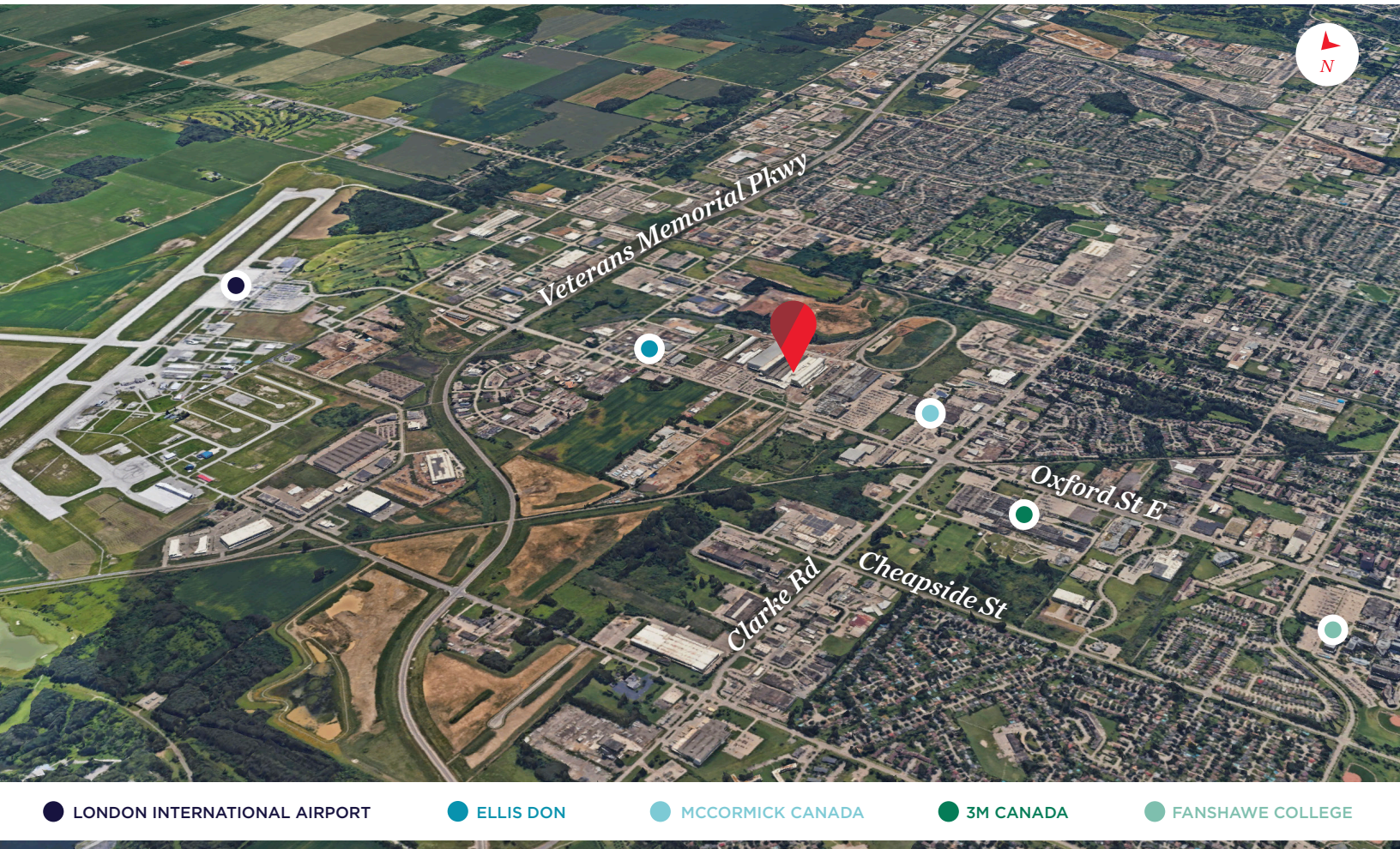
Situated within a state-of-the-art logistics facility in a major industrial node near London International Airport, with easy access to Highway 401 via nearby Veterans Memorial Parkway. Zoned General Industrial (GI1) and Heavy Industrial (HI1).

AVAILABLE SPACE

- 8,000 pallet positions
- Pallet Weight 2,000-3,000 lbs
- Pallet Size: 40" x 48" x 48" high
- Potential to accommodate larger pallets if required

ASKING RENT

- Based on volume: \$9-\$12 per pallet per month
- \$4-\$15 per pallet for ins and outs (depending on throughput speed).



● LONDON INTERNATIONAL AIRPORT

● ELLIS DON

● MCCORMICK CANADA

● 3M CANADA

● FANSHAWE COLLEGE

MICHAEL JOHNSON

Sales Representative

519 438 7325

michael.johnson@cushwakeswo.com

JAMESON LAKE

Sales Representative

519 438 8548

jameson.lake@cushwakeswo.com

CUSHMAN & WAKEFIELD
SOUTHWESTERN ONTARIO
850 Medway Park Dr, Suite 201
London, Ontario N6G 5C6
www.cushwakeswo.com



CUSHMAN & WAKEFIELD

Southwestern Ontario

©2024 Cushman & Wakefield Southwestern Ontario, Real Estate Brokerage, Independently Owned and Operated. A Member of the Cushman & Wakefield Alliance. This information has been obtained from sources believed to be reliable but has not been verified. No warranty or representation, express or implied, is made as to the condition of the property (or properties) referenced herein or as to the accuracy or completeness of the information contained herein, and same is submitted subject to errors, omissions, change of price, rental or other conditions, withdrawal without notice, and to any special listing conditions imposed by the property owner(s). Any projections, opinions or estimates are subject to uncertainty and do not signify current or future property performance. All rights reserved.