



RENOVATED OFFICE BUILDING | FOR LEASE

29 COLBORNE  
3 STREET

*London, ON N6B 2S9*



 **CUSHMAN & WAKEFIELD**  
Southwestern Ontario

# PROPERTY HIGHLIGHTS

Renovated office building for lease in the city center. The property includes a reception area, boardroom, open workspaces, ethernet drops, private offices, two kitchens, and a staff lounge. Ample FREE on-site parking. Existing office furniture can be negotiated.

AVAILABLE SPACE	ASKING RENT	ADDITIONAL RENT
4,578 SF	\$7.50 PSF Net	\$3.95 PSF (Est.)

- **Zoning:** OR
- Asking rent is \$4,368.17 per month + HST and utilities



## JAMESON LAKE

Sales Representative

519 438 8548

[jameson.lake@cushwakeswo.com](mailto:jameson.lake@cushwakeswo.com)

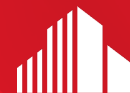
## BRENT RUDELL

Broker of Record

519 438 5608

[brent.rudell@cushwakeswo.com](mailto:brent.rudell@cushwakeswo.com)

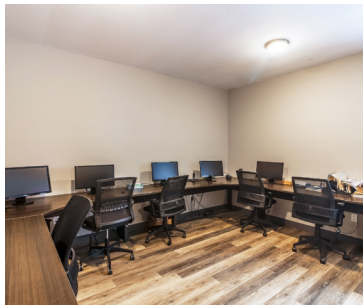
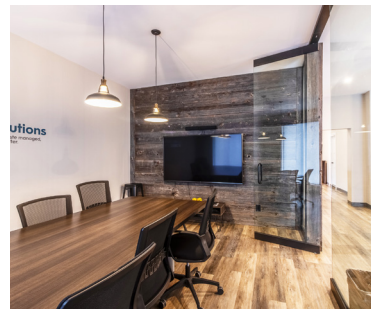
CUSHMAN & WAKEFIELD  
SOUTHWESTERN ONTARIO  
850 Medway Park Dr, Suite 201  
London, Ontario N6G 5C6  
[www.cushwakeswo.com](http://www.cushwakeswo.com)



**CUSHMAN &  
WAKEFIELD**

Southwestern Ontario

# PROPERTY IMAGES



## JAMESON LAKE

Sales Representative  
519 438 8548

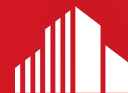
[jameson.lake@cushwakeswo.com](mailto:jameson.lake@cushwakeswo.com)

## BRENT RUDELL

Broker of Record  
519 438 5608

[brent.rudell@cushwakeswo.com](mailto:brent.rudell@cushwakeswo.com)

CUSHMAN & WAKEFIELD  
SOUTHWESTERN ONTARIO  
850 Medway Park Dr, Suite 201  
London, Ontario N6G 5C6  
[www.cushwakeswo.com](http://www.cushwakeswo.com)

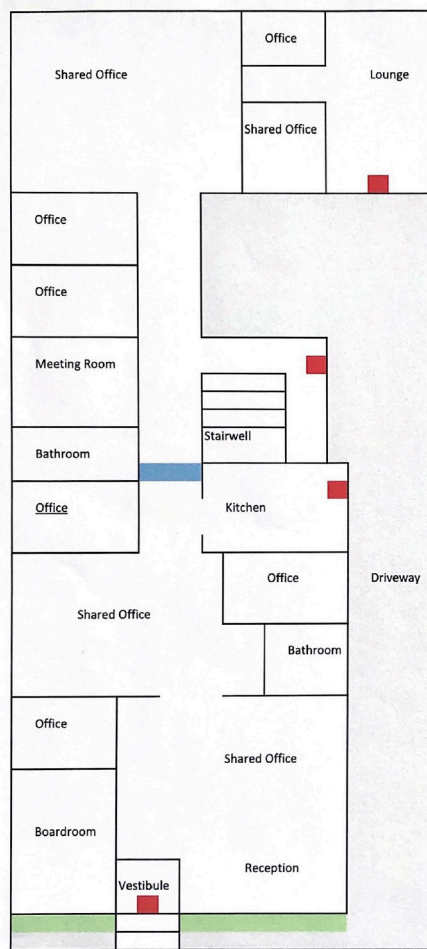


## CUSHMAN & WAKEFIELD

Southwestern Ontario

# FLOOR PLANS

## MAIN FLOOR



**392 COLBORNE ST LONDON ON**

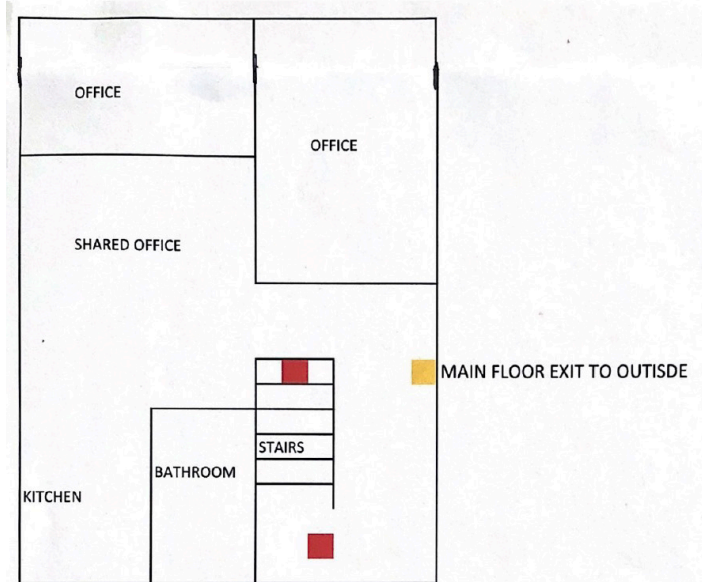
NOT TO SCALE

DATE: MARCH 2022

■ EXIT

MAIN FIRST FLOOR

## SECOND FLOOR



**392 COLBORNE ST LONDON ON**

NOT TO SCALE

DATE: MARCH 2022

■ EXIT

SECOND FLOOR

**JAMESON LAKE**

*Sales Representative*

519 438 8548

jameson.lake@cushwakeswo.com

**BRENT RUDELL**

*Broker of Record*

519 438 5608

brent.rudell@cushwakeswo.com

**CUSHMAN & WAKEFIELD**  
 SOUTHWESTERN ONTARIO  
 850 Medway Park Dr, Suite 201  
 London, Ontario N6G 5C6  
 www.cushwakeswo.com



**CUSHMAN & WAKEFIELD**

Southwestern Ontario