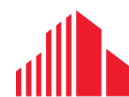




CONTEMPORARY OFFICE SPACE | FOR LEASE

**4 NORTH  
8 ROUTLEDGE  
5 PARK  
1 UNIT 101**

*London, ON N6H 5L6*



**CUSHMAN &  
WAKEFIELD**

Southwestern Ontario



# ABOUT THE PROPERTY

Contemporary office space available for lease in the sought-after Hyde Park area of London, ON. This well-appointed space boasts ample natural light, a welcoming reception area, private offices, open workspaces, a modern kitchen, a boardroom.

## AVAILABLE SPACE

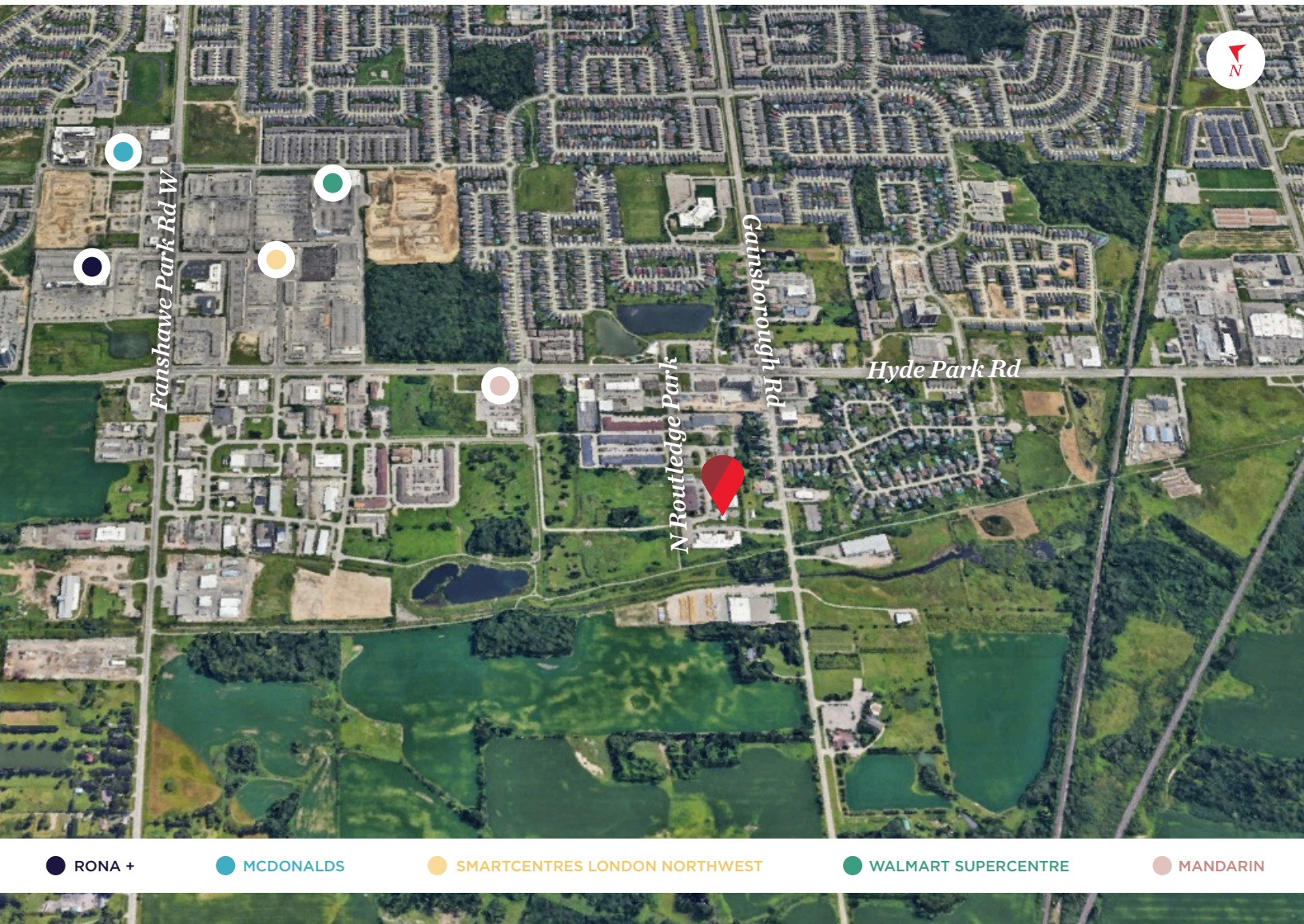
2,417 SF

## ASKING RENT

\$4,250 per month + HST\*

\*Inclusive of utilities

- **Zoning:** L1(3)
- **Parking:** Ample spaces available on-site for free



**JAMESON LAKE**

519 438 8548

[jameson.lake@cushwakeswo.com](mailto:jameson.lake@cushwakeswo.com)

**ANDREW JOHNSON**

*Sales Representative*

519 438 8639

[andrew.johnson@cushwakeswo.com](mailto:andrew.johnson@cushwakeswo.com)

**CUSHMAN & WAKEFIELD**  
SOUTHWESTERN ONTARIO  
850 Medway Park Dr, Suite 201  
London, Ontario N6G 5G6  
[www.cushwakeswo.com](http://www.cushwakeswo.com)



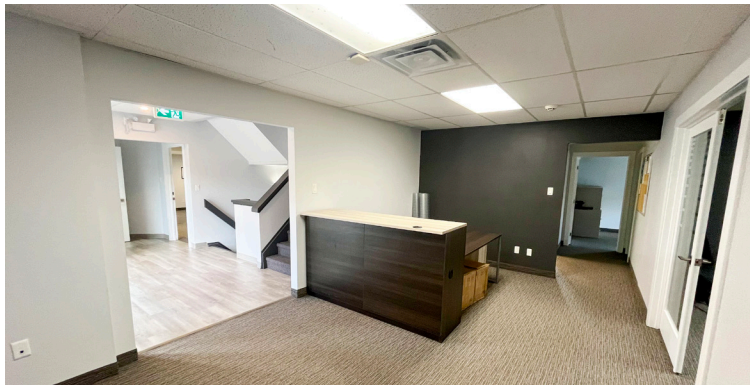
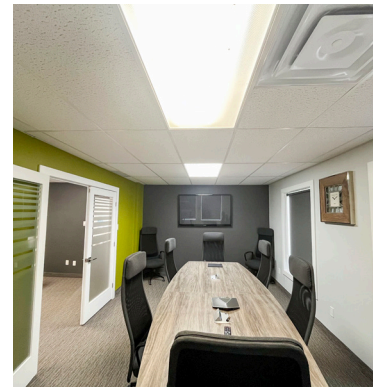
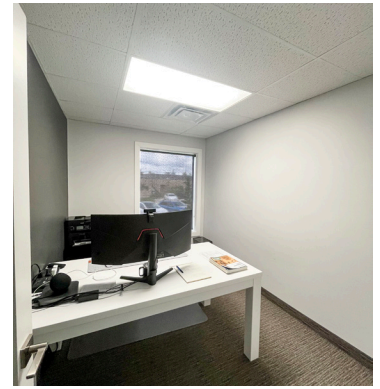
**CUSHMAN & WAKEFIELD**

Southwestern Ontario

©2024 Cushman & Wakefield Southwestern Ontario, Real Estate Brokerage, Independently Owned and Operated. A Member of the Cushman & Wakefield Alliance. This information has been obtained from sources believed to be reliable but has not been verified. No warranty or representation, express or implied, is made as to the condition of the property (or properties) referenced herein or as to the accuracy or completeness of the information contained herein, and same is submitted subject to errors, omissions, change of price, rental or other conditions, withdrawal without notice, and to any special listing conditions imposed by the property owner(s). Any projections, opinions or estimates are subject to uncertainty and do not signify current or future property performance. All rights reserved.



# PROPERTY IMAGES



**JAMESON LAKE**

519 438 8548

[jameson.lake@cushwakeswo.com](mailto:jameson.lake@cushwakeswo.com)

**ANDREW JOHNSON**

*Sales Representative*

519 438 8639

[andrew.johnson@cushwakeswo.com](mailto:andrew.johnson@cushwakeswo.com)

**CUSHMAN & WAKEFIELD**  
SOUTHWESTERN ONTARIO  
850 Medway Park Dr, Suite 201  
London, Ontario N6G 5G6  
[www.cushwakeswo.com](http://www.cushwakeswo.com)



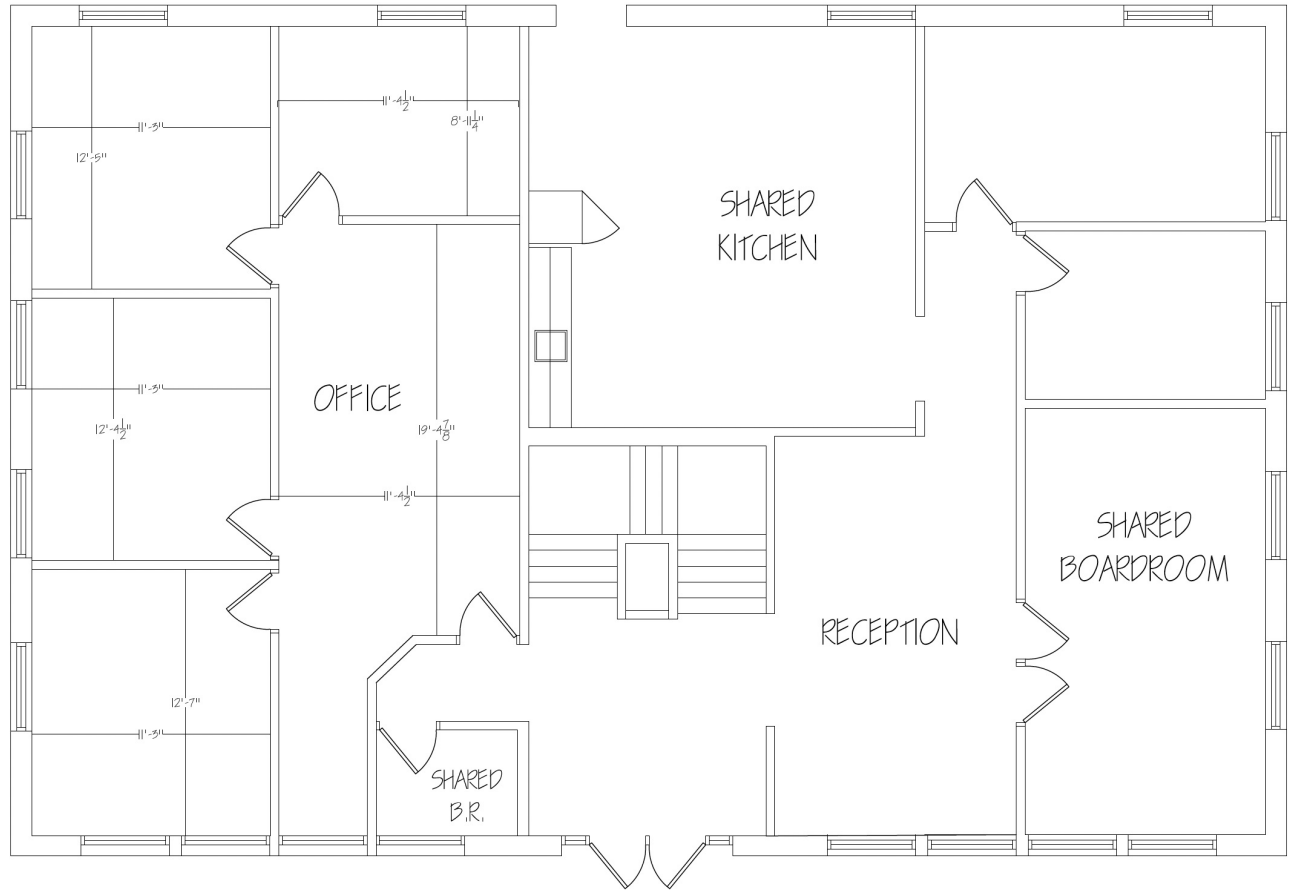
**CUSHMAN & WAKEFIELD**

Southwestern Ontario

©2024 Cushman & Wakefield Southwestern Ontario, Real Estate Brokerage, Independently Owned and Operated. A Member of the Cushman & Wakefield Alliance. This information has been obtained from sources believed to be reliable but has not been verified. No warranty or representation, express or implied, is made as to the condition of the property (or properties) referenced herein or as to the accuracy or completeness of the information contained herein, and same is submitted subject to errors, omissions, change of price, rental or other conditions, withdrawal without notice, and to any special listing conditions imposed by the property owner(s). Any projections, opinions or estimates are subject to uncertainty and do not signify current or future property performance. All rights reserved.



# FLOOR PLAN | MAIN FLOOR



MAIN FLOOR

**JAMESON LAKE**

519 438 8548

[jameson.lake@cushwakeswo.com](mailto:jameson.lake@cushwakeswo.com)

**ANDREW JOHNSON**

*Sales Representative*

519 438 8639

[andrew.johnson@cushwakeswo.com](mailto:andrew.johnson@cushwakeswo.com)

**CUSHMAN & WAKEFIELD**  
SOUTHWESTERN ONTARIO  
850 Medway Park Dr, Suite 201  
London, Ontario N6G 5G6  
[www.cushwakeswo.com](http://www.cushwakeswo.com)



**CUSHMAN & WAKEFIELD**

Southwestern Ontario

©2024 Cushman & Wakefield Southwestern Ontario, Real Estate Brokerage, Independently Owned and Operated. A Member of the Cushman & Wakefield Alliance. This information has been obtained from sources believed to be reliable but has not been verified. No warranty or representation, express or implied, is made as to the condition of the property (or properties) referenced herein or as to the accuracy or completeness of the information contained herein, and same is submitted subject to errors, omissions, change of price, rental or other conditions, withdrawal without notice, and to any special listing conditions imposed by the property owner(s). Any projections, opinions or estimates are subject to uncertainty and do not signify current or future property performance. All rights reserved.