



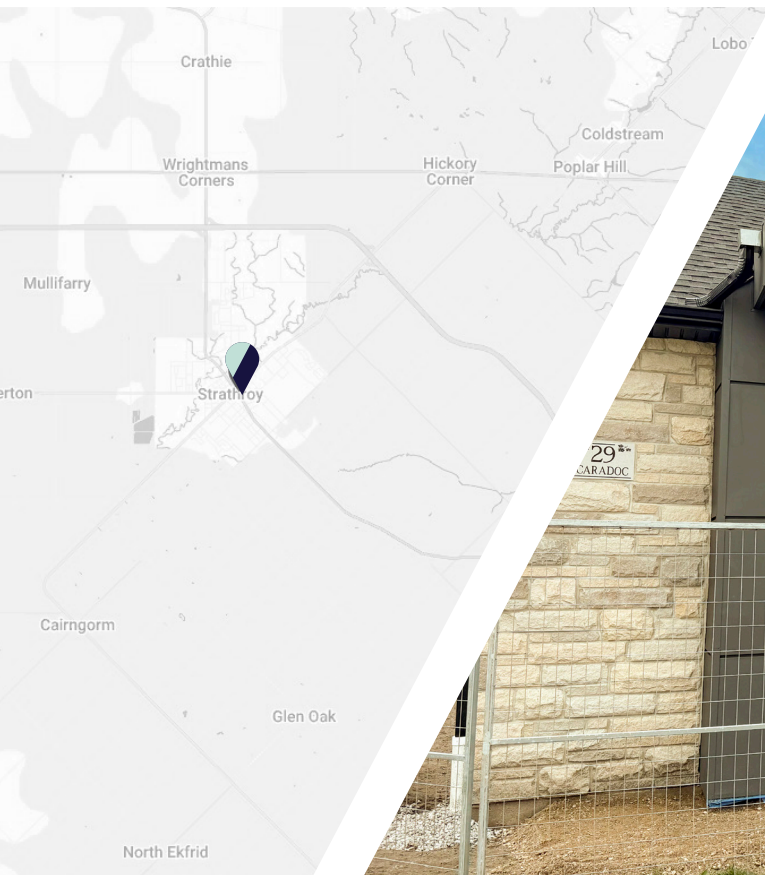
**CUSHMAN &
WAKEFIELD**

Southwestern Ontario

FOR LEASE

29 CARADOC STREET SOUTH

Strathroy, ON



PRIME RETAIL/OFFICE/MEDICAL/DENTAL

ASKING RENT

**\$2,500
PER MONTH**

AVAILABLE SPACE

**1,000
SF**

ZONING

**C1-8
GENERAL COMMERCIAL**

TYLER DESJARDINE

Sales Representative

519 438 5403

tyler.desjardine@cushwakeswo.com

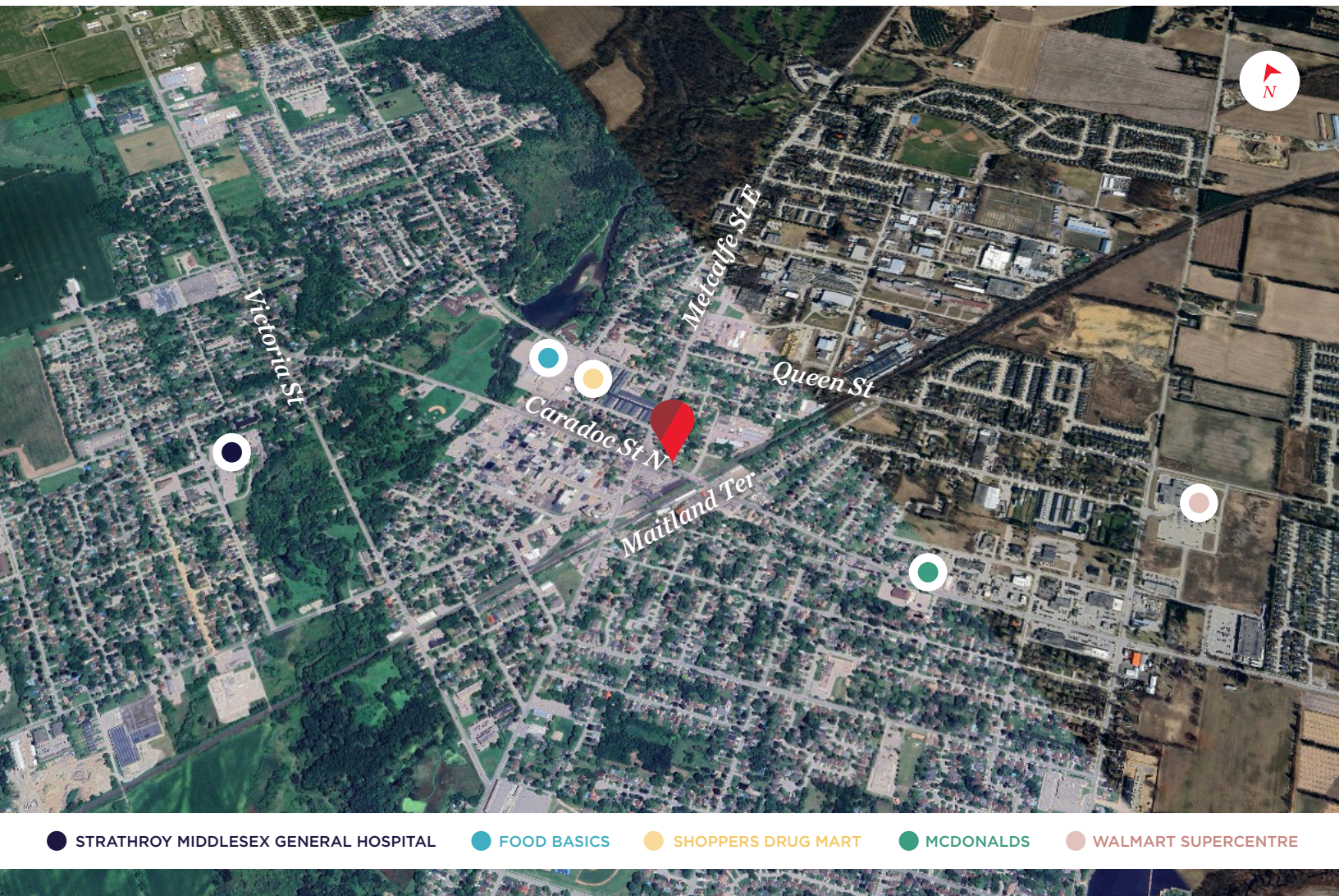
**CUSHMAN & WAKEFIELD
SOUTHWESTERN ONTARIO**
850 Medway Park Dr, Suite 201
London, Ontario N6G 5G6
www.cushwakeswo.com

©2025 Cushman & Wakefield Southwestern Ontario, Real Estate Brokerage, Independently Owned and Operated. A Member of the Cushman & Wakefield Alliance.
This information has been obtained from sources believed to be reliable but has not been verified. No warranty or representation, express or implied, is made as to the condition of the property (or properties) referenced herein or as to the accuracy or completeness of the information contained herein, and same is submitted subject to errors, omissions, change of price, rental or other conditions, withdrawal without notice, and to any special listing conditions imposed by the property owner(s). Any projections, opinions or estimates are subject to uncertainty and do not signify current or future property performance. All rights reserved.

ABOUT THE PROPERTY

Prime commercial/retail/office/medical/dental space available at the corner of Caradoc Street South and Concord Street

- **Zoning: C1-8** - permits a wide range of uses
 - » In the process of being updated to C1 - permits a wide range of uses
- **Parking:** Available for 4 to 6 vehicles
- All new interior look, parking area and sidewalks
- Higher ceilings, new floors, lights, washrooms etc.
- Landlord can build to suit for qualified tenants
- Building is planned to be completely updated and upgraded inside and out
- Utilities are separately metered in the Tenant's name
- Just down the street from Walmart, Canadian Tire, LCBO, Giant Tiger, Staples, etc.
- Do not go direct to the building



● STRATHROY MIDDLESEX GENERAL HOSPITAL

● FOOD BASICS

● SHOPPERS DRUG MART

● MCDONALDS

● WALMART SUPERCENTRE

TYLER DESJARDINE

Sales Representative

519 438 5403

tyler.desjardine@cushwakeswo.com

CUSHMAN & WAKEFIELD
SOUTHWESTERN ONTARIO
850 Medway Park Dr, Suite 201
London, Ontario N6G 5G6
www.cushwakeswo.com

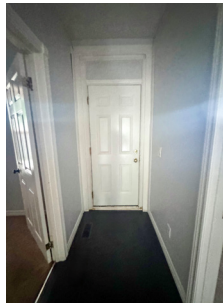
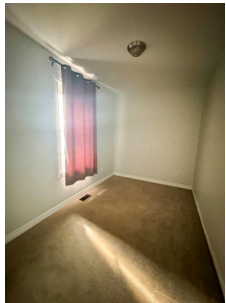


CUSHMAN & WAKEFIELD

Southwestern Ontario

©2025 Cushman & Wakefield Southwestern Ontario, Real Estate Brokerage, Independently Owned and Operated. A Member of the Cushman & Wakefield Alliance. This information has been obtained from sources believed to be reliable but has not been verified. No warranty or representation, express or implied, is made as to the condition of the property (or properties) referenced herein or as to the accuracy or completeness of the information contained herein, and same is submitted subject to errors, omissions, change of price, rental or other conditions, withdrawal without notice, and to any special listing conditions imposed by the property owner(s). Any projections, opinions or estimates are subject to uncertainty and do not signify current or future property performance. All rights reserved.

PROPERTY IMAGES | RENDERINGS



TYLER DESJARDINE

Sales Representative

519 438 5403

tyler.desjardine@cushwakeswo.com

CUSHMAN & WAKEFIELD
SOUTHWESTERN ONTARIO
850 Medway Park Dr, Suite 201
London, Ontario N6G 5G6
www.cushwakeswo.com

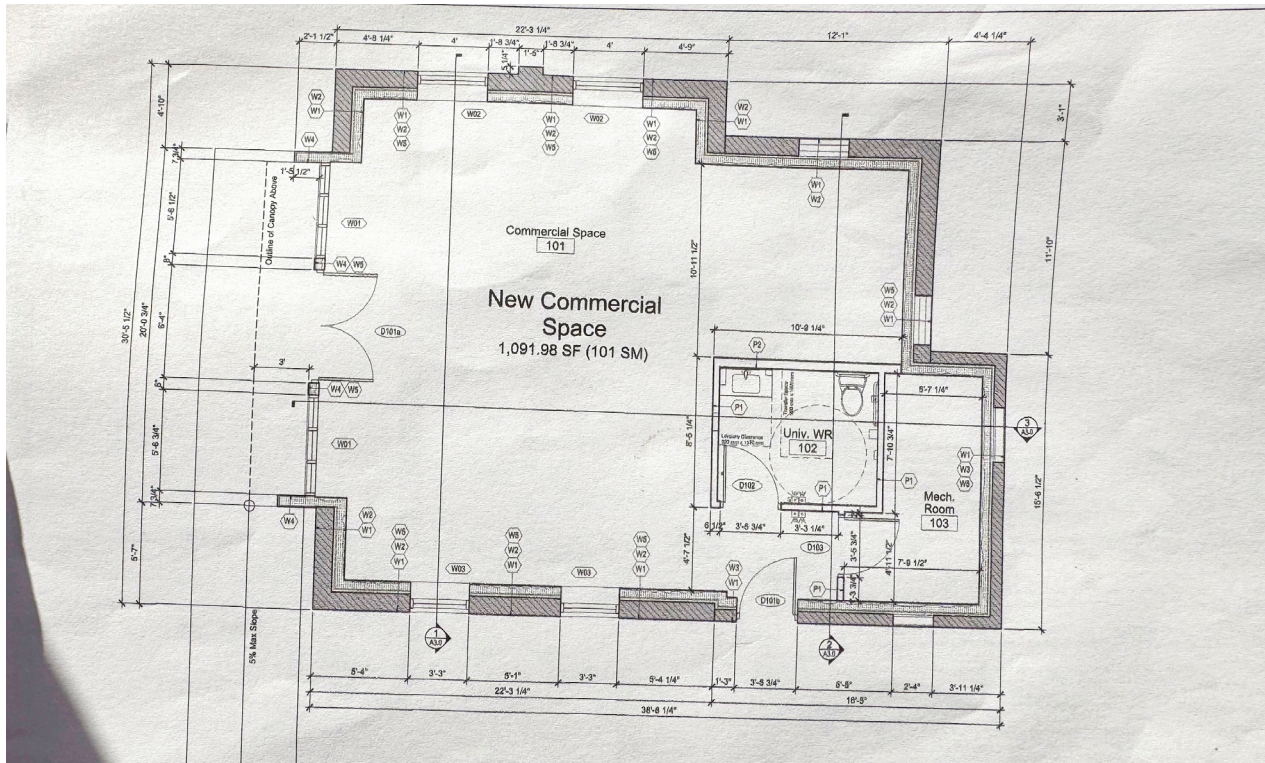
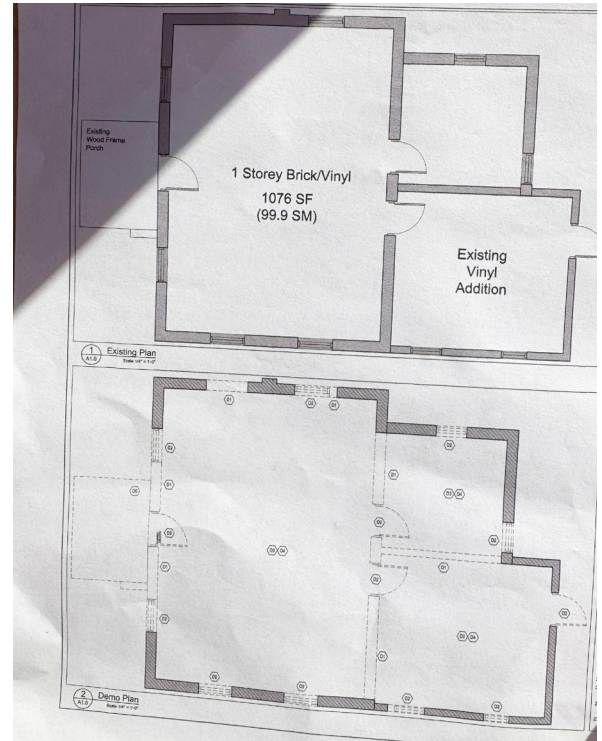
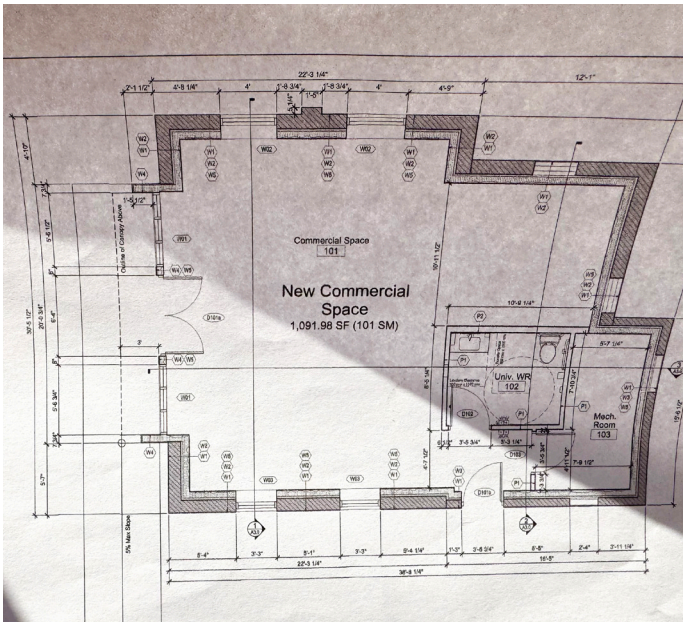


**CUSHMAN &
WAKEFIELD**

Southwestern Ontario

©2025 Cushman & Wakefield Southwestern Ontario, Real Estate Brokerage, Independently Owned and Operated. A Member of the Cushman & Wakefield Alliance. This information has been obtained from sources believed to be reliable but has not been verified. No warranty or representation, express or implied, is made as to the condition of the property (or properties) referenced herein or as to the accuracy or completeness of the information contained herein, and same is submitted subject to errors, omissions, change of price, rental or other conditions, withdrawal without notice, and to any special listing conditions imposed by the property owner(s). Any projections, opinions or estimates are subject to uncertainty and do not signify current or future property performance. All rights reserved.

SITE PLANS



TYLER DESJARDINE

Sales Representative

519 438 5403

tyler.desjardine@cushwakeswo.com

CUSHMAN & WAKEFIELD
SOUTHWESTERN ONTARIO
 850 Medway Park Dr, Suite 201
 London, Ontario N6G 5G6
www.cushwakeswo.com

CUSHMAN & WAKEFIELD
 Southwestern Ontario

©2025 Cushman & Wakefield Southwestern Ontario, Real Estate Brokerage, Independently Owned and Operated. A Member of the Cushman & Wakefield Alliance. This information has been obtained from sources believed to be reliable but has not been verified. No warranty or representation, express or implied, is made as to the condition of the property (or properties) referenced herein or as to the accuracy or completeness of the information contained herein, and same is submitted subject to errors, omissions, change of price, rental or other conditions, withdrawal without notice, and to any special listing conditions imposed by the property owner(s). Any projections, opinions or estimates are subject to uncertainty and do not signify current or future property performance. All rights reserved.