



PRIME LIGHT INDUSTRIAL/WAREHOUSE/COMMERCIAL BUILDING | **FOR LEASE**

1033
CLARKE
ROAD
UNIT 4

London, ON N5V 3B3



**CUSHMAN &
WAKEFIELD**

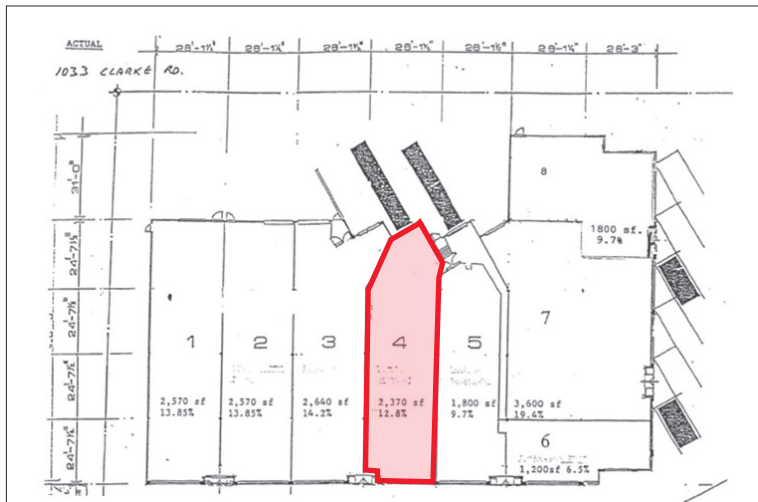
Southwestern Ontario

ABOUT THE PROPERTY

Prime light industrial/warehouse/commercial building for lease in northeast London

UNIT	AVAILABLE SPACE	ASKING NET RENT	ADDITIONAL RENT
4	Approx. 2,370 SF	\$10.50 PSF Net escalating	\$3.50 PSF

- **Zoning: RSC2/RSC4/LI7** - permits a wide range of uses
- **Clear Height: 16'**
- **Grade Level Loading Door: 1**
- Front showroom, with a couple of offices and rear storage/shipping area
- Gas heat
- Utilities separately metered in tenant's name
- Located at the corner of Clarke Road and Stronach Crescent in Northeast London
- Quick access to Veterans Memorial Highway and Highway 401



TYLER DESJARDINE
Sales Representative
 519 438 5403
 tyler.desjardine@cushwakeswo.com

CUSHMAN & WAKEFIELD
SOUTHWESTERN ONTARIO
 850 Medway Park Dr, Suite 201
 London, Ontario N6G 5C6
www.cushwakeswo.com

CUSHMAN & WAKEFIELD
 Southwestern Ontario