

**CUSHMAN &
WAKEFIELD**

Southwestern Ontario

FOR SALE

1801 DUNDAS STREET

London, ON



PRIME FREESTANDING RETAIL BUILDING

ASKING PRICE

\$3,500,000

BUILDING AREA

21,855 SF

SITE AREA

0.94 ACRES

JAMESON LAKE

Sales Representative

519 438 8548

jameson.lake@cushwakeswo.com

MICHAEL JOHNSON

Sales Representative

519 438 7325

michael.johnson@cushwakeswo.com

**CUSHMAN & WAKEFIELD
SOUTHWESTERN ONTARIO**

850 Medway Park Dr, Suite 201
London, Ontario N6G 5G6

www.cushwakeswo.com

©2026 Cushman & Wakefield Southwestern Ontario, Real Estate Brokerage, Independently Owned and Operated. A Member of the Cushman & Wakefield Alliance. This information has been obtained from sources believed to be reliable but has not been verified. No warranty or representation, express or implied, is made as to the condition of the property (or properties) referenced herein or as to the accuracy or completeness of the information contained herein, and same is submitted subject to errors, omissions, change of price, rental or other conditions, withdrawal without notice, and to any special listing conditions imposed by the property owner(s). Any projections, opinions or estimates are subject to uncertainty and do not signify current or future property performance. All rights reserved.

ABOUT THE PROPERTY

Prime freestanding retail building on busy Dundas Street near Argyle Mall in London Ontario. The property offers approximately 16,810 SF of retail/showroom/office space and 5,045 SF of warehouse with 30' clear height and dock/grade-level loading. Features include 106' frontage, ample parking and easy truck access. Recent upgrades include HVAC, roof, LED lighting, washrooms, parking lot, and refreshed stucco facade. With over 24,000 vehicles passing daily, this location is ideal for owner-occupiers or investors seeking a high-profile rental opportunity.

- **Zoning:** Associated Shopping Area Commercial (ASA1) - supports a variety of uses, including retail, grocery or service-oriented businesses
- **Taxes:** \$48,597.27 (2025)

PERMITTED USES | ASSOCIATED SHOPPING AREA COMMERCIAL (ASA1) ZONE

Animal hospitals	Convenience service establishments	Convenience stores
Dry cleaning and laundry plants	Duplicating shops	Financial institutions
Grocery stores	Restaurants	Retail stores
Personal service establishments	Pharmacies	Printing establishments
Video rental establishments	Brewing on premises establishment. (Z.-1-95390)	

<https://london.ca/sites/default/files/2026-01/Section%2024%20-%20Associated%20Shopping%20Area%20Commercial%20%28ASA%29%20Zone.pdf>



JAMESON LAKE
Sales Representative

519 438 8548
jameson.lake@cushwakeswo.com

MICHAEL JOHNSON
Sales Representative

519 438 7325
michael.johnson@cushwakeswo.com

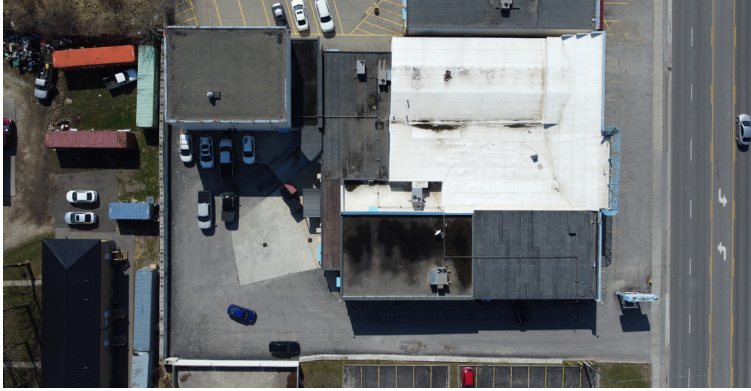
CUSHMAN & WAKEFIELD
SOUTHWESTERN ONTARIO
850 Medway Park Dr, Suite 201
London, Ontario N6G 5G6
www.cushwakeswo.com



CUSHMAN & WAKEFIELD

Southwestern Ontario

PROPERTY IMAGES



JAMESON LAKE
Sales Representative
519 438 8548

jameson.lake@cushwakeswo.com

MICHAEL JOHNSON
Sales Representative
519 438 7325

michael.johnson@cushwakeswo.com

CUSHMAN & WAKEFIELD
SOUTHWESTERN ONTARIO
850 Medway Park Dr, Suite 201
London, Ontario N6G 5G6
www.cushwakeswo.com



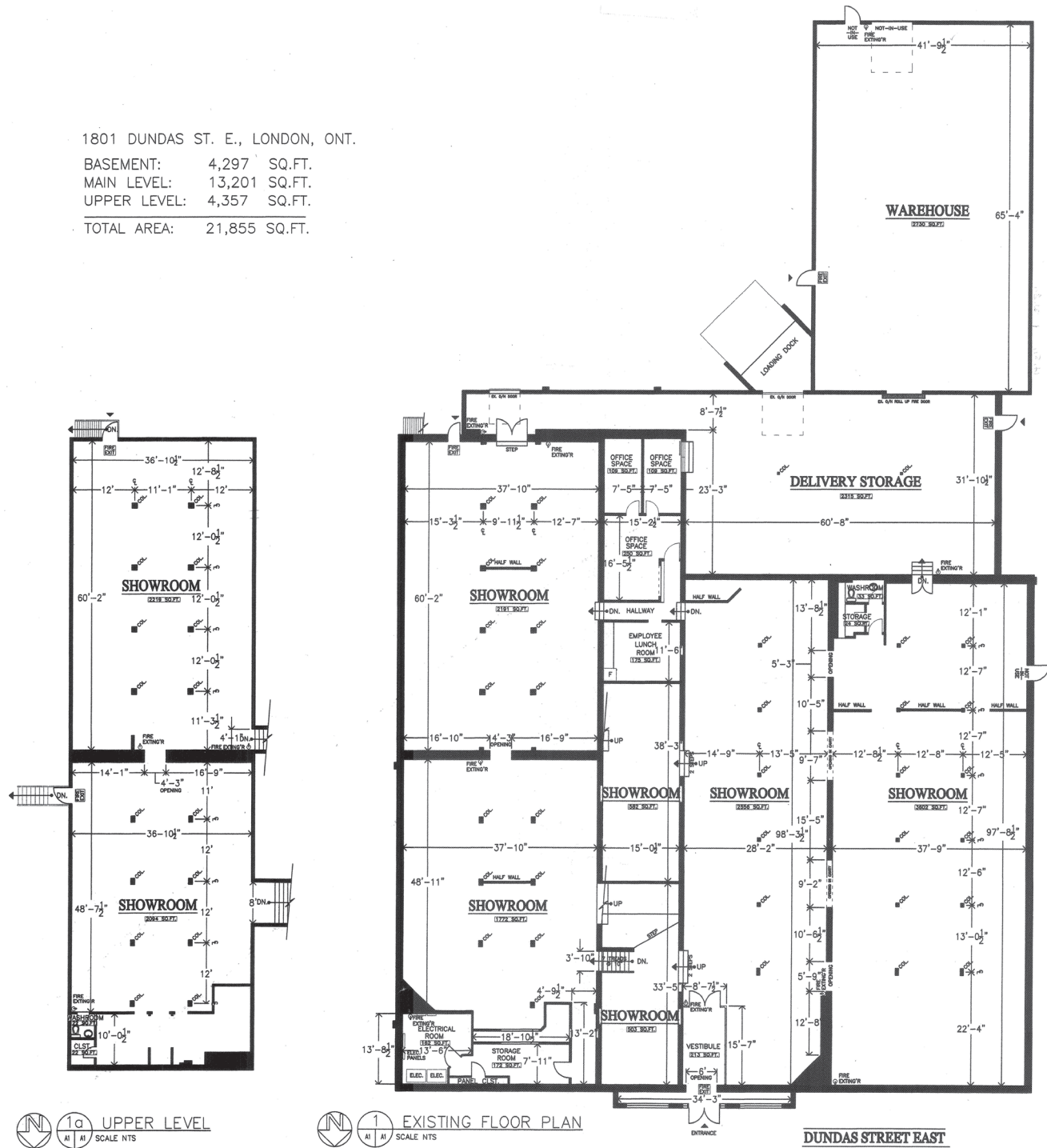
CUSHMAN & WAKEFIELD

Southwestern Ontario

FLOOR PLAN

1801 DUNDAS ST. E., LONDON, ONT.

BASEMENT: 4,297 SQ.FT.
 MAIN LEVEL: 13,201 SQ.FT.
 UPPER LEVEL: 4,357 SQ.FT.
 TOTAL AREA: 21,855 SQ.FT.



1a UPPER LEVEL
 SCALE NTS

1 EXISTING FLOOR PLAN
 SCALE NTS

DUNDAS STREET EAST

JAMESON LAKE
 Sales Representative
 519 438 8548

jameson.lake@cushwakeswo.com

MICHAEL JOHNSON
 Sales Representative
 519 438 7325

michael.johnson@cushwakeswo.com

CUSHMAN & WAKEFIELD
 SOUTHWESTERN ONTARIO
 850 Medway Park Dr, Suite 201
 London, Ontario N6G 5G6
www.cushwakeswo.com



CUSHMAN & WAKEFIELD

Southwestern Ontario