

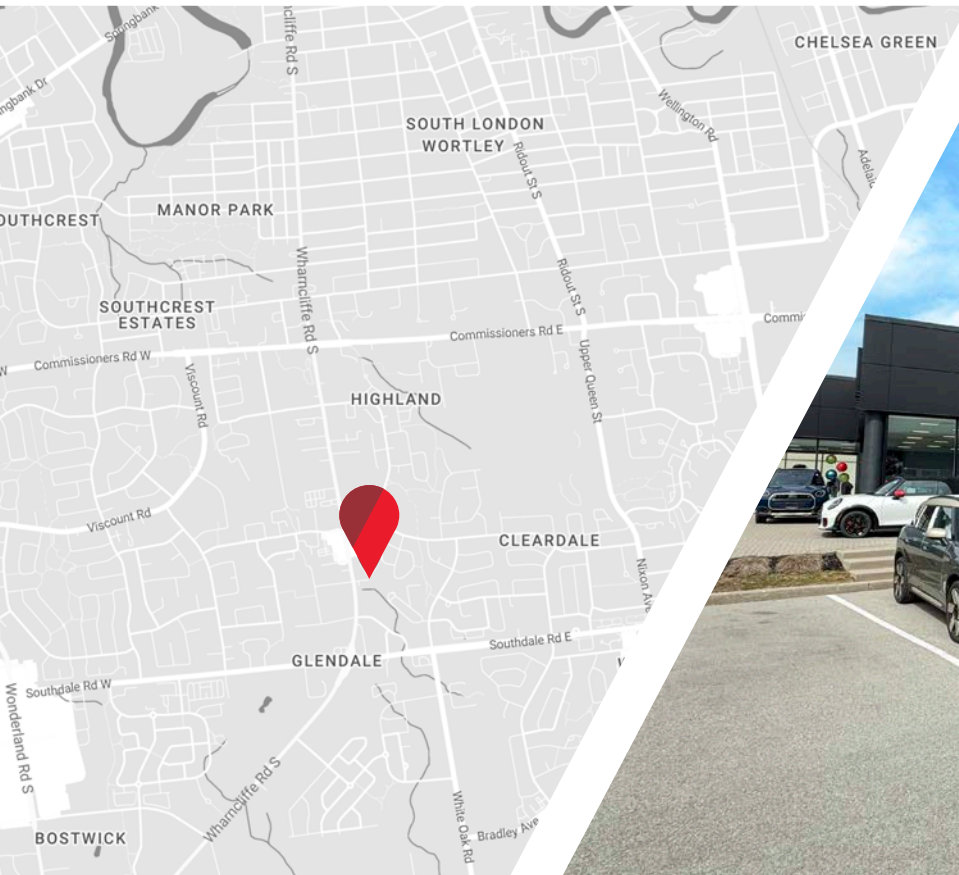
**CUSHMAN &  
WAKEFIELD**

Southwestern Ontario

**FOR LEASE**

**764 WHARNCLIFFE RD S, UNIT 200**

*London, ON*



**PRIME 2ND FLOOR OFFICE SPACE IN SOUTHWEST LONDON**

**ASKING RENT**

**\$1,950  
PER MONTH**

**AVAILABLE AREA**

**1,000 SF**

**ZONING**

**RSC2/RSC4/  
RSC5(22)**

**TYLER DESJARDINE**

*Sales Representative*

519 438 5403

tyler.desjardine@cushwakeswo.com

**CUSHMAN & WAKEFIELD  
SOUTHWESTERN ONTARIO**  
850 Medway Park Dr, Suite 201  
London, Ontario N6G 5G6  
[www.cushwakeswo.com](http://www.cushwakeswo.com)

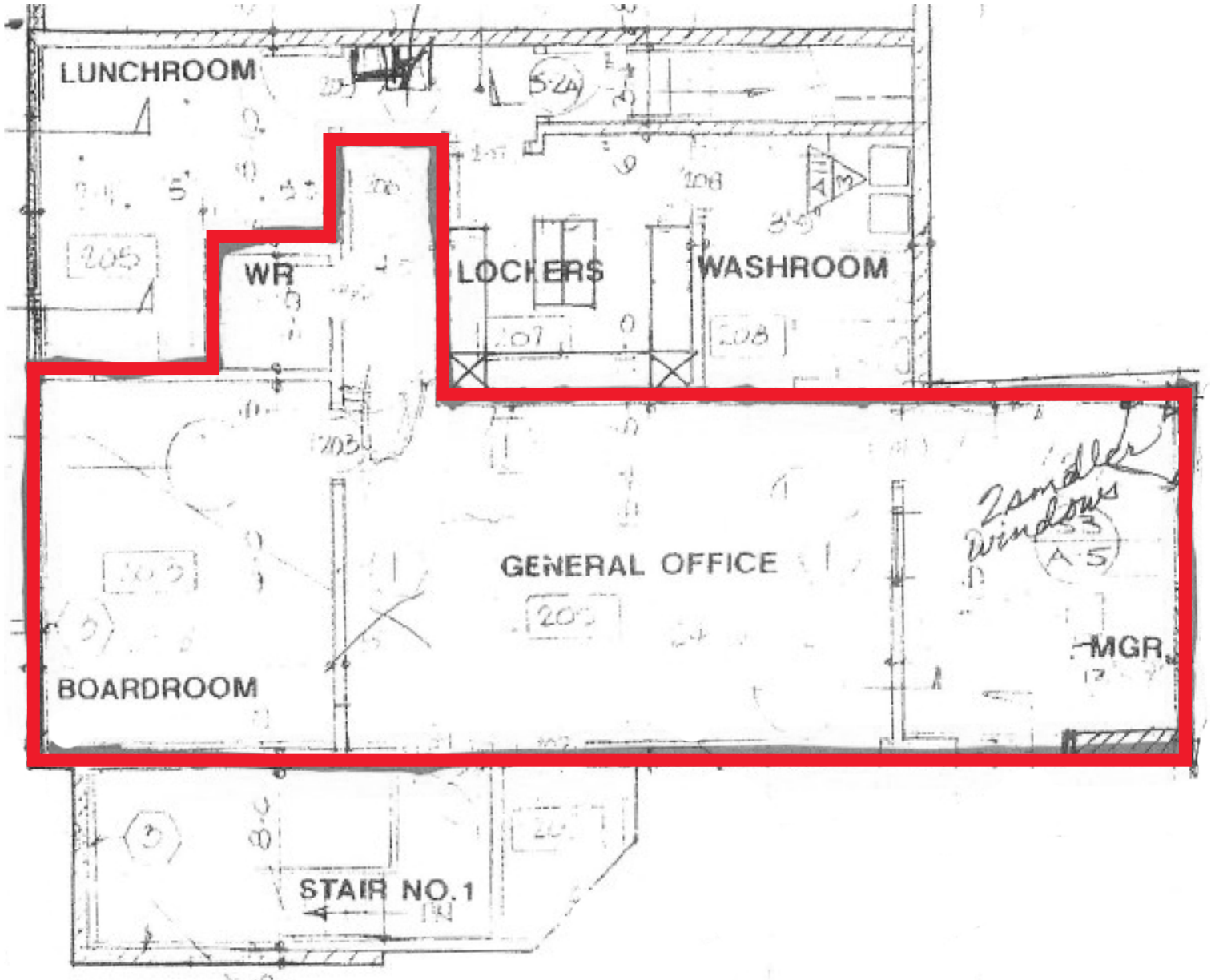
©2026 Cushman & Wakefield Southwestern Ontario, Real Estate Brokerage, Independently Owned and Operated. A Member of the Cushman & Wakefield Alliance. This information has been obtained from sources believed to be reliable but has not been verified. No warranty or representation, express or implied, is made as to the condition of the property (or properties) referenced herein or as to the accuracy or completeness of the information contained herein, and same is submitted subject to errors, omissions, change of price, rental or other conditions, withdrawal without notice, and to any special listing conditions imposed by the property owner(s). Any projections, opinions or estimates are subject to uncertainty and do not signify current or future property performance. All rights reserved.

# ABOUT THE PROPERTY

2nd Floor office space available in southwest London. Located directly on Wharncliffe Road South, just north of Southdale Road.

- **Available Area:** Unit 200 - 1,000 SF
- **Asking Rent:** \$1,950 per month +HST. Utilities included
- **Zoning:** RSC2/RSC4/RSC5(22) - permits a wide range of uses
- **Parking:** On-site available
- **Signage:** Pylon along Wharncliffe Road available
- Plenty of natural light

## FLOOR PLAN | 764 WHARNCLIFFE RD S - 2ND FLOOR, UNIT 200



**TYLER DESJARDINE**

*Sales Representative*

519 438 5403

tyler.desjardine@cushwakeswo.com

**CUSHMAN & WAKEFIELD**  
SOUTHWESTERN ONTARIO  
850 Medway Park Dr, Suite 201  
London, Ontario N6G 5G6  
[www.cushwakeswo.com](http://www.cushwakeswo.com)

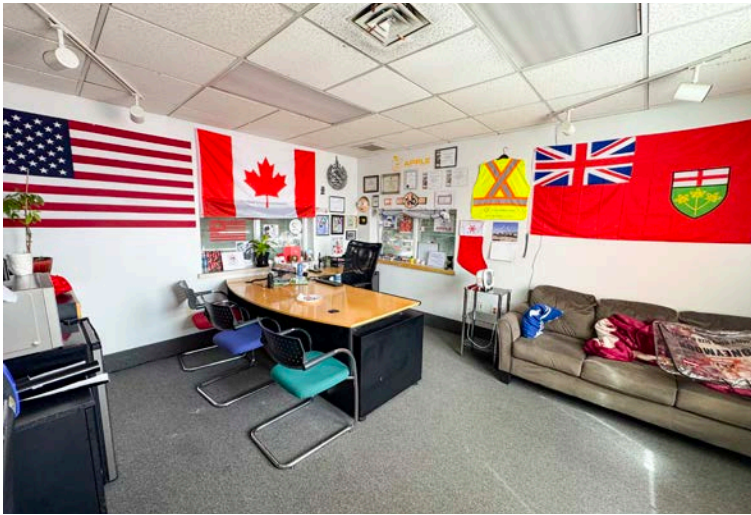
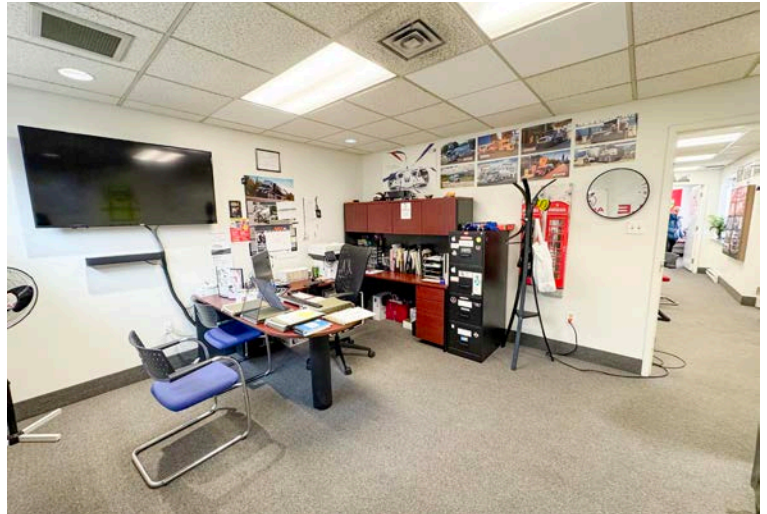
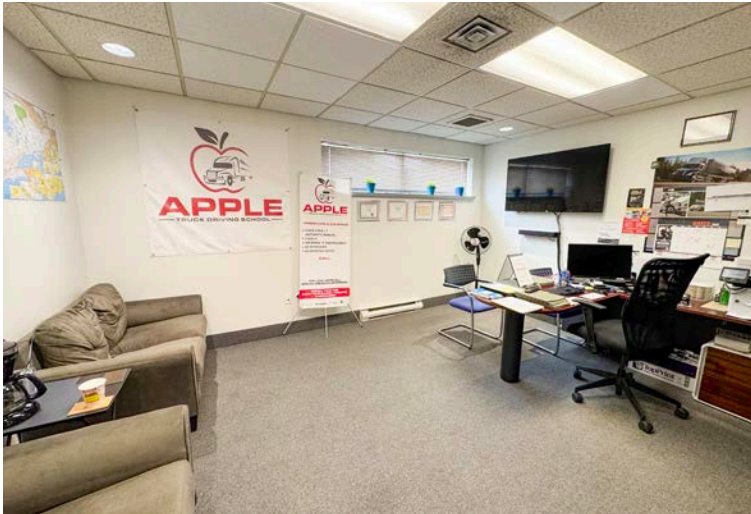


**CUSHMAN & WAKEFIELD**

Southwestern Ontario

# PROPERTY IMAGES

## UNIT 200



**TYLER DESJARDINE**

*Sales Representative*

519 438 5403

tyler.desjardine@cushwakeswo.com

**CUSHMAN & WAKEFIELD**  
SOUTHWESTERN ONTARIO  
850 Medway Park Dr, Suite 201  
London, Ontario N6G 5G6  
[www.cushwakeswo.com](http://www.cushwakeswo.com)

 **CUSHMAN & WAKEFIELD**  
Southwestern Ontario